

Manual Supplement

Manual Title:	6100B/6105A Users	Supplement Issue:	3
Part Number:	3499335	Issue Date:	3/12
Print Date:	September 2009	Page Count:	4
Revision/Date:	1, 6/10		

This supplement contains information necessary to ensure the accuracy of the above manual.

Change #1, 55882

On page 1-8, under **1-18. Electrical Specifications**, replace the paragraph with the following:

The accuracies stated include the calibration uncertainty provided by Fluke Service Centers. In the following specifications, uncertainty is stated at coverage factor $k = 2$, equivalent to 95 % confidence level, in accordance with accepted metrology practices.

On pages 1-19 and 1-20, in the tables under sections **1-46, 1-47, and 1-50,**

Change: **Voltage at 7 % to 100 % of Range**

To: **Voltage at 70 % to 100 % of Range**

Change #2

On page 4-10, replace Figure 4-9 with:

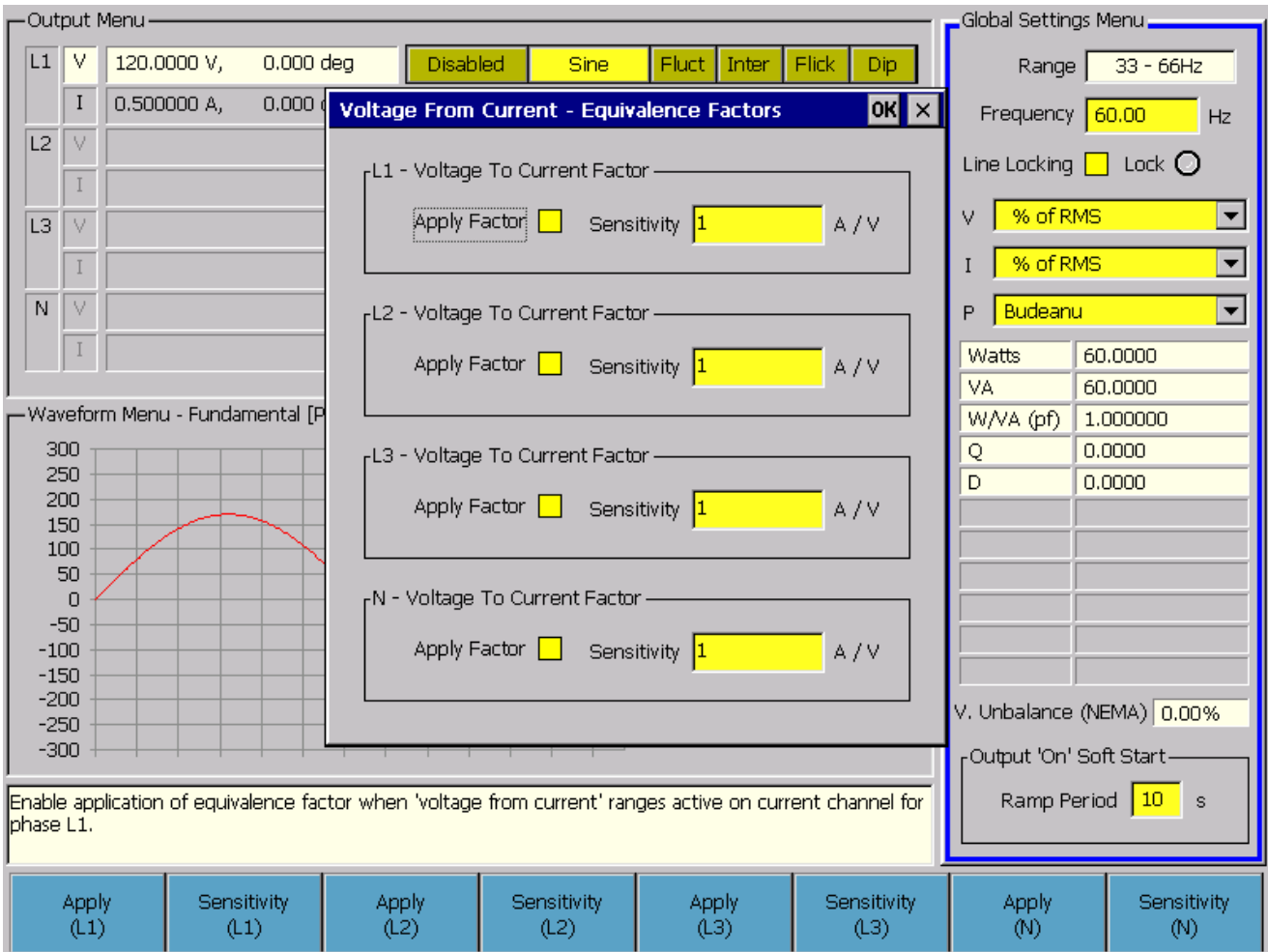
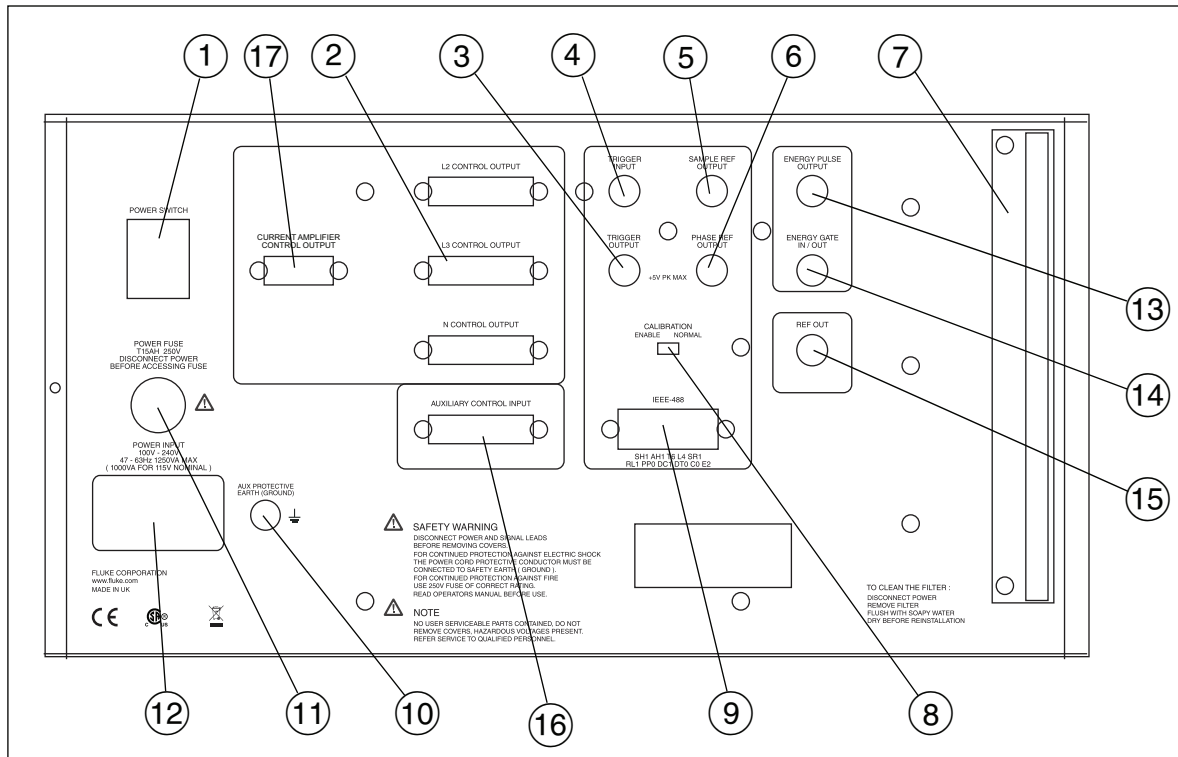


Figure 4-9. Voltage from Current

gdw45.bmp

Change #3

On page 3-16, replace Figure 3-13, with:



gdw07.eps

On page 3-17, Table 3-2, add:

17	52120A Current Amplifier Control Output connection.
----	---

On page 4-8, replace Figure 4-6, with:

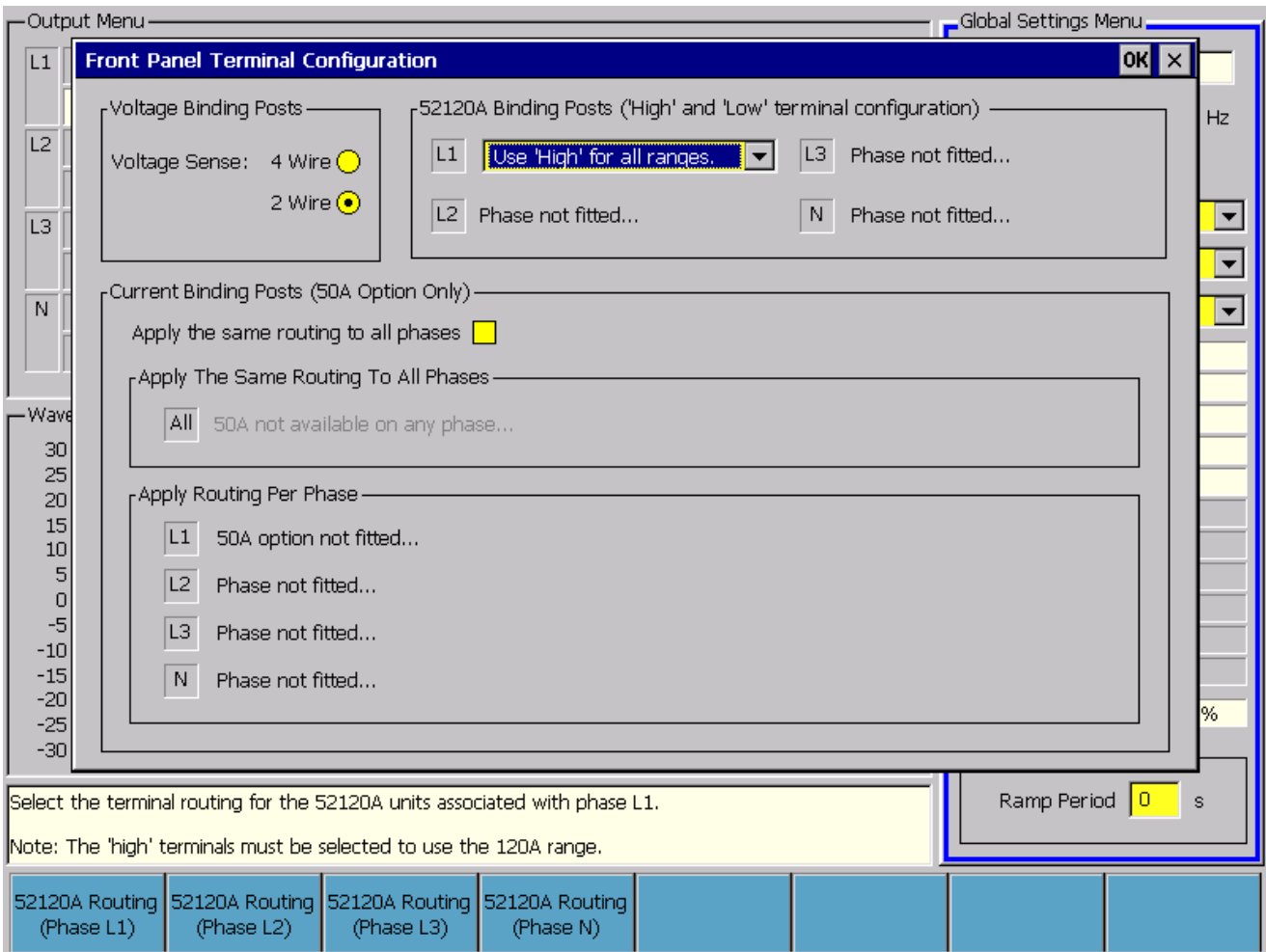


Figure 4-6. Front-Panel Terminal Configuration

gdw43.bmp

On page 4-38, following the Note, add:

Operation with 52120A Current Amplifier

6100B, 6101B, 6105A and 6106A current output capability can be extended to 120 A by connecting a 52120A. Up to 360 A can be achieved with three 52120A connected with their current outputs in parallel. Refer to the 52120A User's Manual to find out how to connect one or more 52120A to a 6100B.

When one to three 52120A are connected to the 6100B, the current output range list is extended to show the number of 52120A connected and the selected 52120A range. For example when three 52120A are connected the current range selection includes the selection 3xExt 2A, 3xExt 20A and 3xExt 120A. See Figure 4-45. Note that in place of the Bandwidth selection you can select 52120A L Comp On or Off.

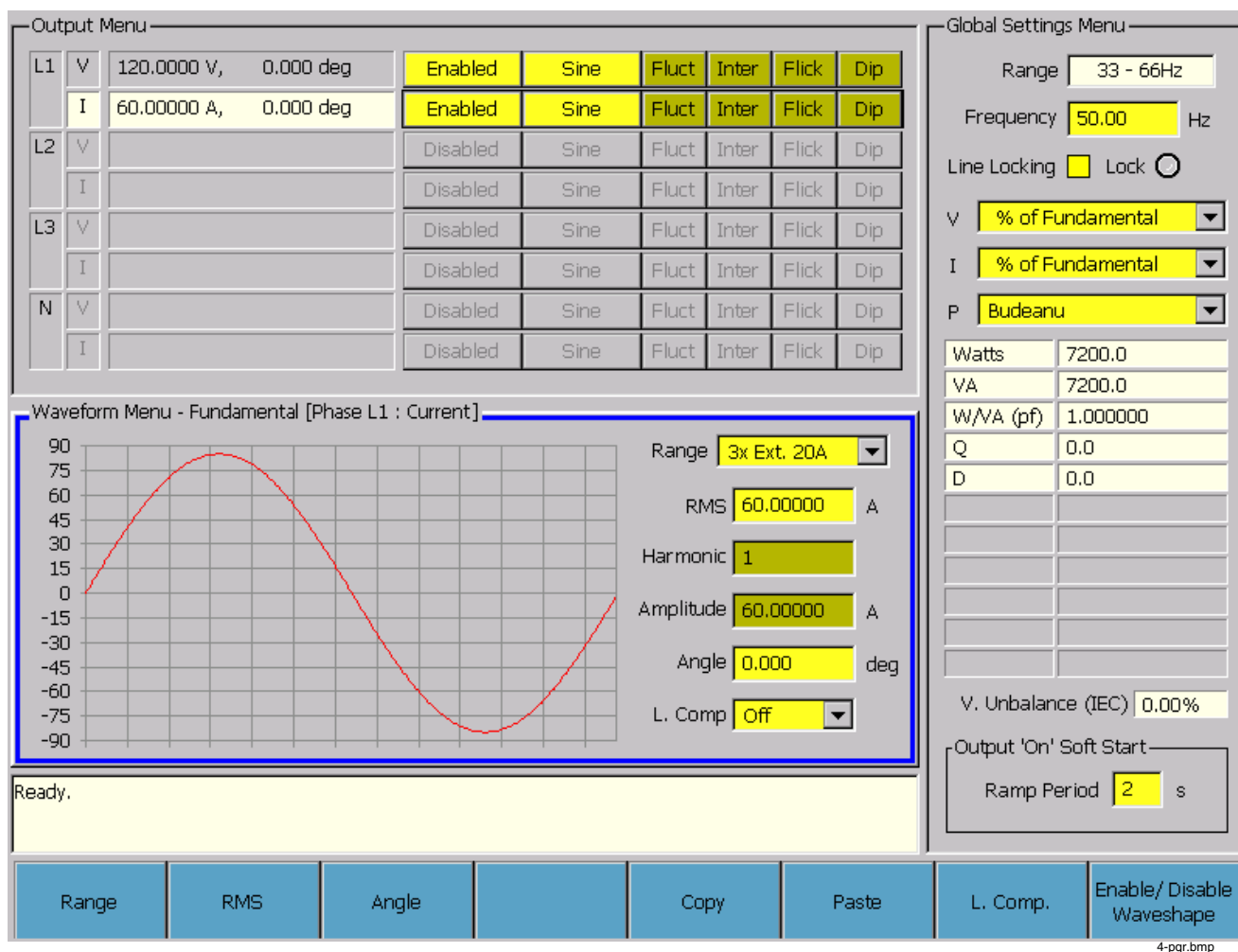


Figure 4-45. Output Menu

Refer to the 52120A User's Manual for remote operation of 52120A connected to a 6100B.