

**Kambič**

# ULTRA STABLE STANDARD RESISTOR MAINTENANCE BATH

(+ 5 °C ...+ 60 °C)

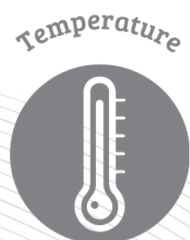
**OB-60/2 LTUS**

**OB-100/2 LTUS**

**OB-110/2 LTUS**

**Dedicated standard resistor maintenance baths  
with exceptional metrology performance:**

- Uniformity and stability in mK range
- Unique vertical flow design
- Hinged transparent cover
- State of the art solution
- Multiple access ports
  - Two bath sizes



## Device description:

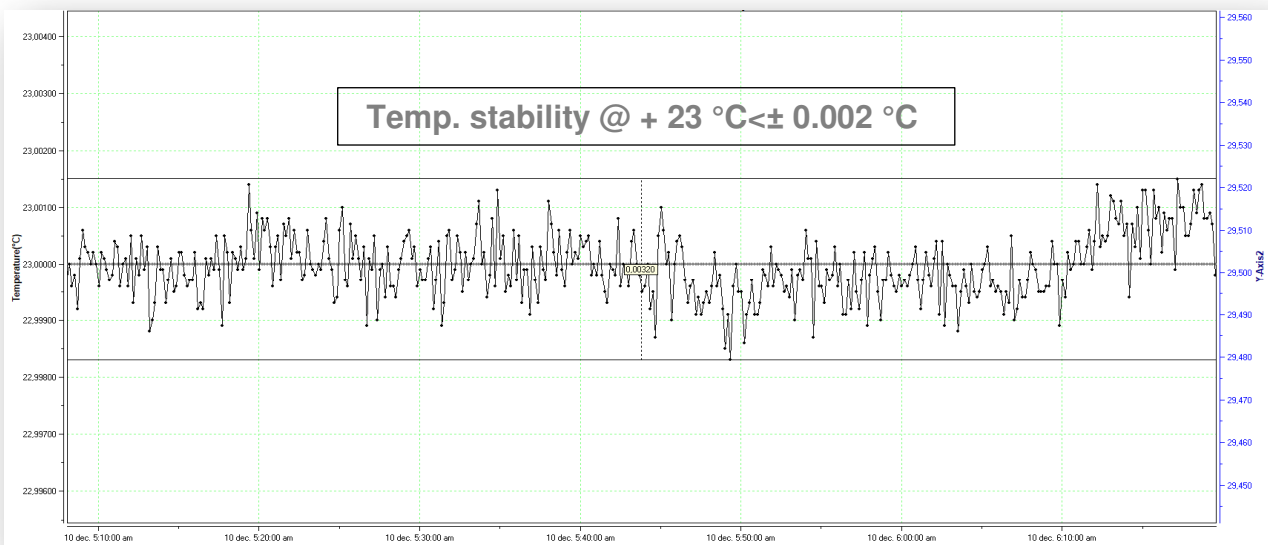






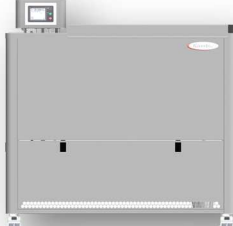
**Controller functions:**



**Bath's temperature stability graph at + 23 °C:**



## Technical data:

	OB-60/2 LTUS	OB-100/2 LTUS	OB-110/2 LTUS
			
External dimensions (WxHxD) in mm	1000 x 1035 x 550	1100 x 1035 x 650	1100 x 1120 x 750
Internal dimensions (WxHxD) in mm	550 x 320 x 268	640 x 400 x 268	640 x 350 x 500
Working volume (L)	~ 47	~ 68	~ 112
Fluid quantity for operation (L)	~ 78	~ 115	~ 155
Temperature range (°C)	+ 5 ...+ 60	+ 5 ...+ 60	+ 5 ...+ 60
Temperature display resolution (°C)	0.001	0.001	0.001
Temperature set resolution (°C)	0.001	0.001	0.001
Temperature stability (°C)	± 0.003 @ 23 °C	± 0.003 @ 23 °C	± 0.003 @ 23 °C
Temperature uniformity (°C)	< ± 0.007@ 23 °C	< ± 0.007@ 23 °C	< ± 0.007@ 23 °C
Cool down rate	~ 260 min (+ 20 °C ...+ 5 °C)	~ 320 min (+ 20 °C ...+ 5 °C)	~ 450 min (+ 20 °C ...+ 5 °C)
Heat up rate	~ 120 min (+ 20 °C ...+ 60 °C)	~ 150 min (+ 20 °C ...+ 60 °C)	~ 245 min (+ 20 °C ...+ 60 °C)
Temperature Control	PID	PID	PID
Noise level (dBA)	< 58	< 58	< 58
Cooling	Compressor Cooling System	Compressor Cooling System	Compressor Cooling System
Power supply	230 V 50/60 HZ (± 10 %)	230 V 50/60 HZ (± 10 %)	230 V 50/60 HZ (± 10 %)
Wattage (W)	3200	3200	3200
Interface	RS 232 (USB as option)	RS 232 (USB as option)	RS 232 (USB as option)
Weight (kg)	~ 110	~ 125	~ 155

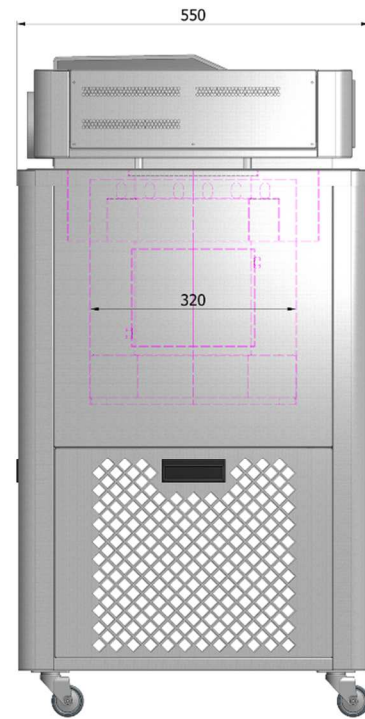
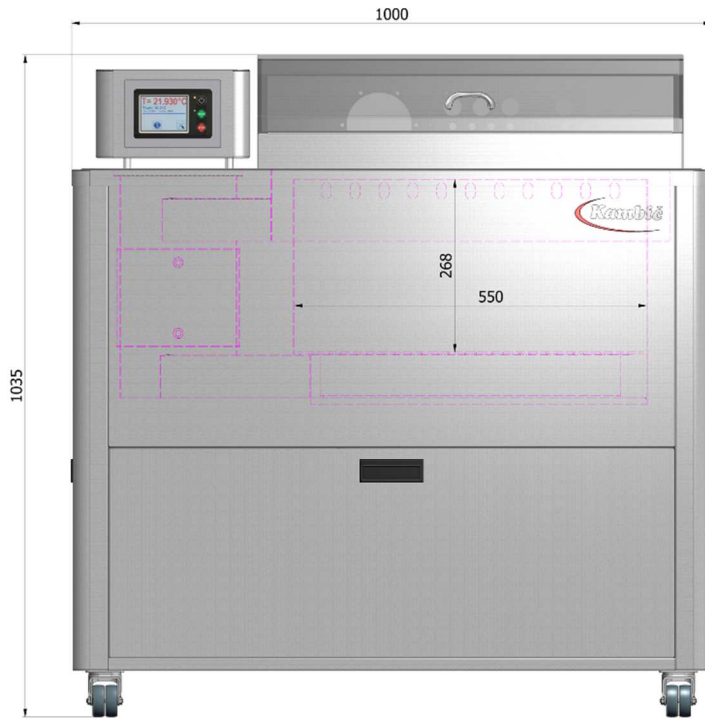
\*All performance data with fluid KDC 200.05

\*All performance in controlled environment ( $T_{\text{ambient}} = 22 \text{ °C} \pm 3 \text{ °C}$ )!

\*Accessories might affect performance!

## Ordering information and accessories:

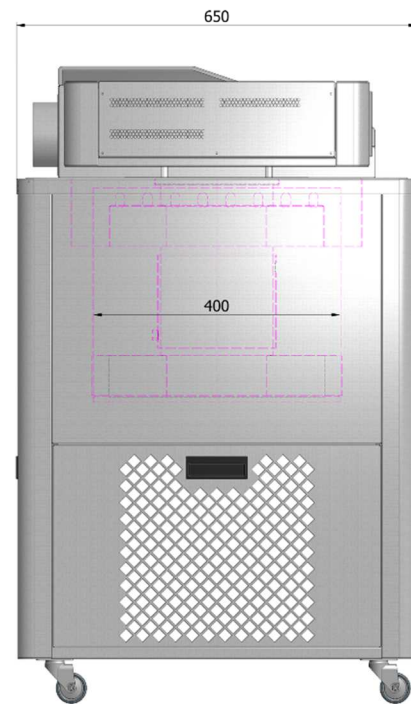
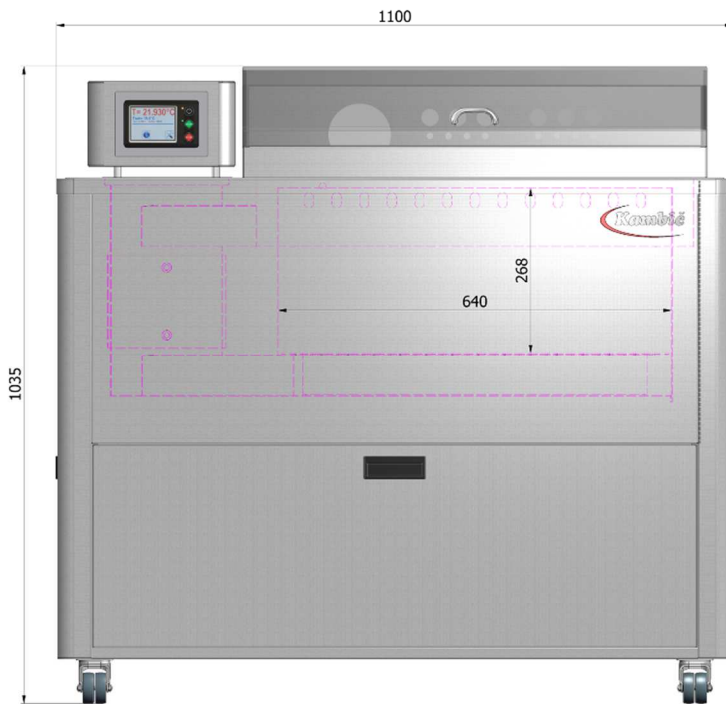
Description	Part no.
Ultra stable standard resistor maintenance bath OB-60/2 LTUS	1644
Ultra stable standard resistor maintenance bath OB-100/2 LTUS	1643
Ultra stable standard resistor maintenance bath OB-110/2 LTUS	2944
USB interface	1466
Evaluation report – performed by Kambič	1719
Evaluation report (accredited ISO/IEC 17025:2017)	2997
OB-Tool (Monitoring and data collection software)	104
Silicone oil fluid KDC 200.05 (- 40 °C ...+ 130 °C)	645



SHIPPING	
W	1150 mm
H	1200 mm
D	700 mm
WEIGHT	130 kg

\* we reserve the right to modifications

DIMENSIONAL DRAWING	PRODUCT	MODEL
	ULTRA STABLE RESISTOR MAINTENANCE BATH	OB-60/2 LTUS

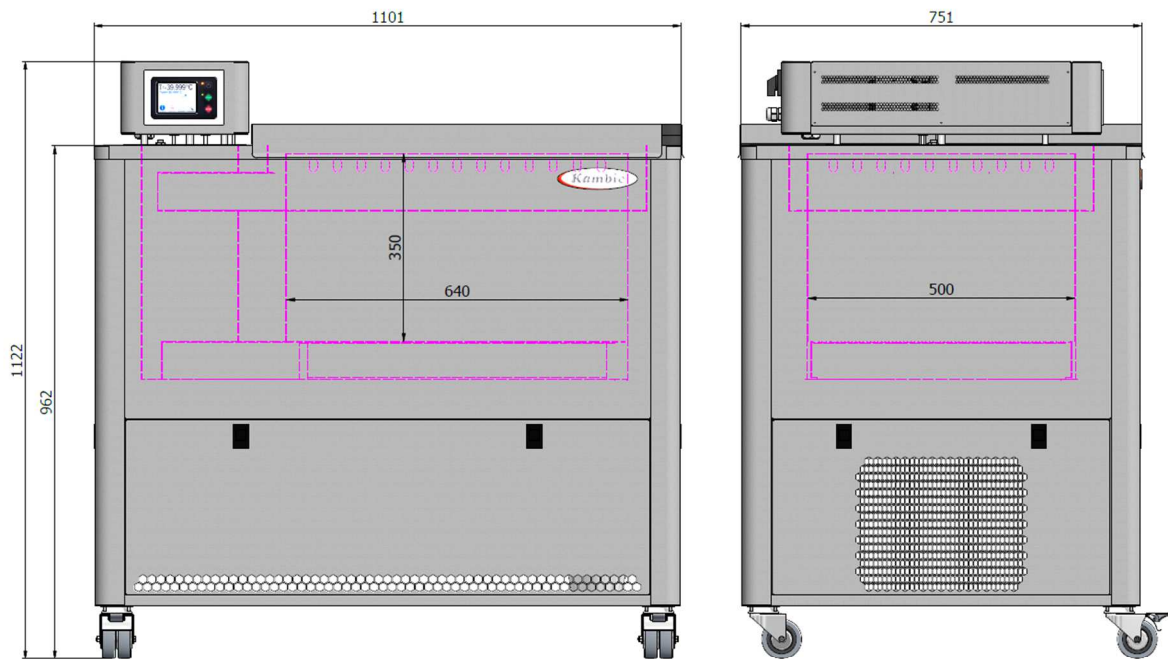


SHIPPING	
W	1250 mm
H	1200 mm
D	800 mm
WEIGHT	155 kg

\* we reserve the right to modifications

DIMENSIONAL DRAWING	PRODUCT	MODEL
	ULTRA STABLE RESISTOR MAINTENANCE BATH	OB-100/2 LTUS





SHIPPING	
W	1230 mm
H	1350 mm
D	950 mm
weight	210 kg

\* we reserve the right to modifications

DIMENSIONAL DRAWING	PRODUCT	MODEL
	CALIBRATION BATH	OB-110/2 LT US